



ASME Vertical Propane Dispenser Tanks



Manchester Tank's ASME Vertical Propane Dispenser Tanks are economical, sturdy and dependable units with an attractive appearance and ideal for installation where space is limited. The highly visible installation is safe, professional looking and great advertising that will last for years.

FEATURES

- Sizes range from 660 to 1,999 gallons
- Steel Vertical Dispenser Base consists of I-Beam "X" base and optional guard rail
- Crash Post & Protective Railing consists of two railings and 8 posts
- Portable base for easy dispenser relocation
- Base supports dispenser to safely endure up to a Seismic Zone 4 and 120 mph winds
- 250 PSI service pressure
- Designed and constructed in accordance with the ASME Section VIII, Division 1 Code
- Registered with the National Board of Boiler and Pressure Vessel Inspectors
- Pumps and meters purchased at a local propane distributor
- Made in the U.S.A.

Manchester Tank & Equipment Co.

1000 Corporate Centre Drive, Suite 300
Franklin, TN 37067

Customer Service:

P: 800-399-5628 • F: 800-877-9988

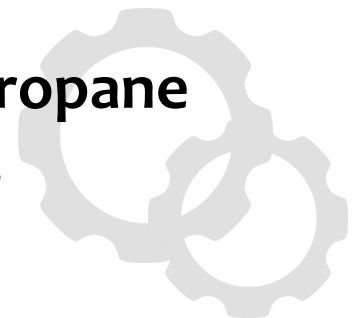
www.manchestertank.com



FINDING A BETTER WAY SINCE 1946



ASME Vertical Propane Dispenser Tanks



PART NUMBER	PRODUCT DESCRIPTION	LPG CAPACITY	WATER CAPACITY	DIAMETER	OVERALL LENGTH	TARE WEIGHT
		GAL	LBS	IN	IN	LBS
29014	660 Gallon ASME Vertical Propane Dispenser	528	660	42	119	1999
22014	1150 Gallon ASME Vertical Propane Dispenser	920	1150	48	159	3000
29016	1600 Gallon ASME Vertical Propane Dispenser	1280	1600	48	216	4150
23354	1999 Gallon ASME Vertical Propane Dispenser	1600	1999	54	220	6020

Manchester Tank's ASME Vertical Propane Dispenser Tank styles have mounting options and built-in guard rail accessories.

Steel Vertical Dispenser Base

- Consists of three I-Beams, which form an "X"
- One I-Beam spans the 10' base, from which the other two smaller beams connect
- Legs attach to the base at all four ends

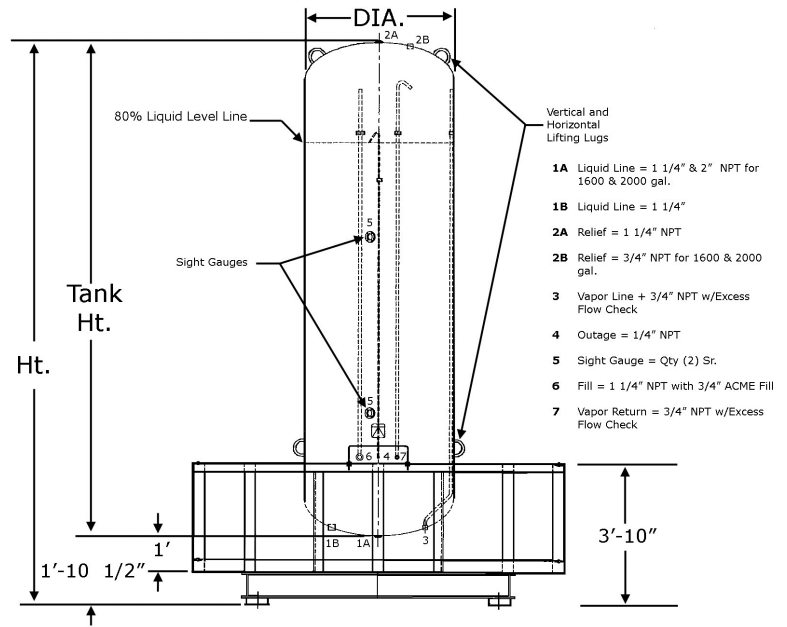
Concrete Footings

- Concrete footings are necessary for each leg of the dispenser base
- Refer to NFPA Pamphlet No. 58 and consult your local building codes for foundation preparation

Crash Post & Protective Railing

- Consists of two railings and 8 posts
- Curved structural angled protective railing and 3" NPS pipe posts
- Crash posts and protective railings welded in half circles for shipping, then bolted together on-site to complete circular railing

Vertical Tank Specifications



ACCESSORIES

PART NUMBER	PRODUCT DESCRIPTION	DIAMETER	OVERALL LENGTH	TARE WEIGHT
		IN	IN	LBS
29005	Tank Base for 660, 1150 & 1600 Gallon Tanks	N/A	10.5	413
22774	Crash Post & Railing for 660, 1150 & 1600 Gallon Tanks	120	35.5	590
270292	Tank Base for 1999 Gallon Tank	N/A	10.3	633
270293	Crash Post & Railing for 1999 Gallon Tank	134	35.5	688

FINDING A BETTER WAY SINCE 1946